



GMT MONTHLY MEMBERSHIP PROGRESS REPORT

Results as of: 1/31/2017

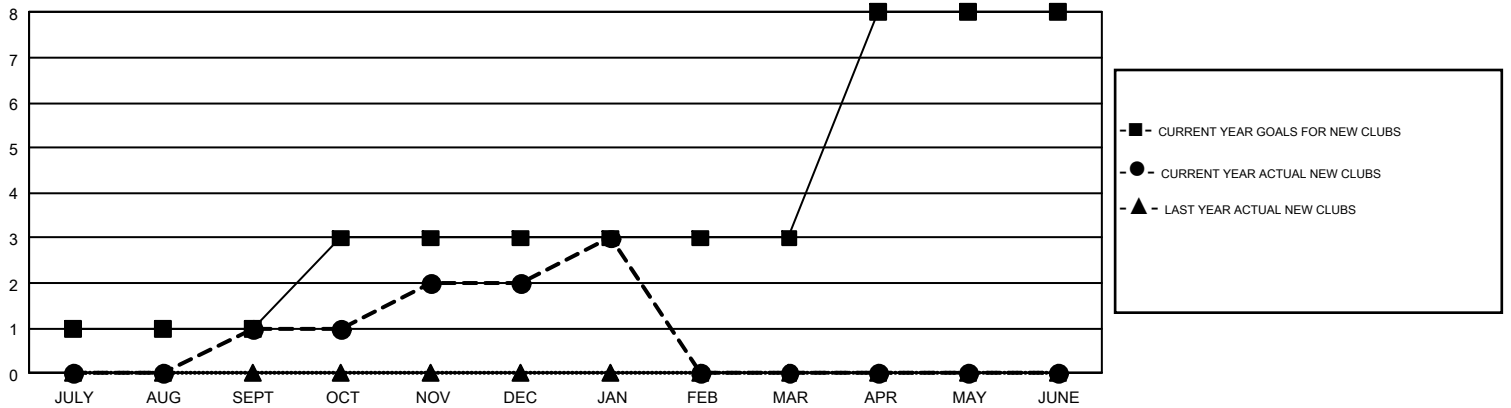
GMT Constitutional Area 6-Afr, Group G

GMT: MIKE NEWLANDS

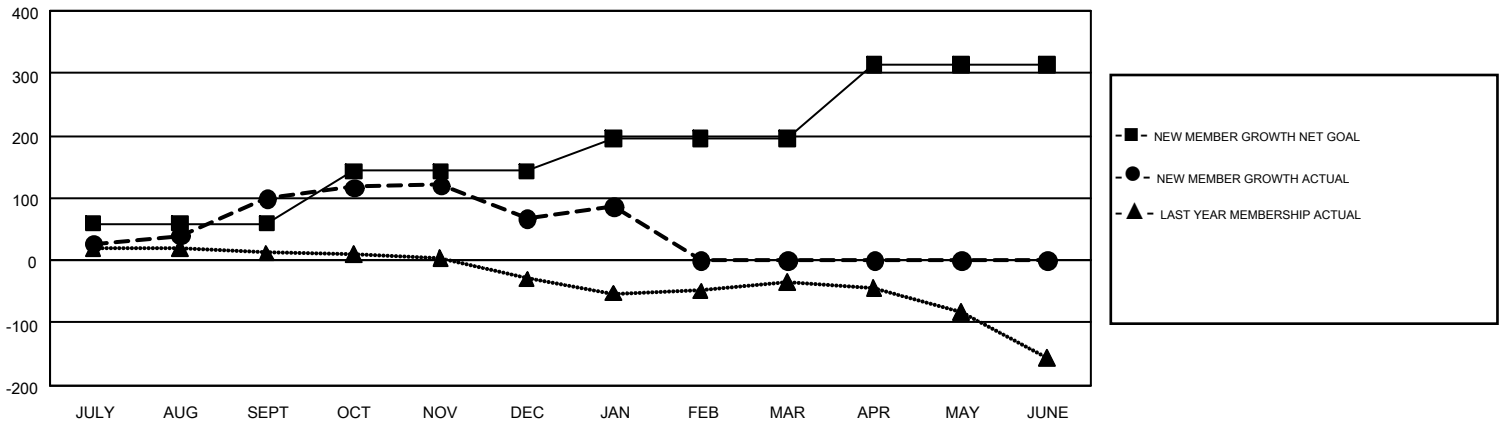
REPORT DOES NOT INCLUDE CLUBS IN UNDISTRICTED AREAS.

Clubs				Members			
RESULTS FOR 2016-2017				RESULTS FOR 2016-2017			
QUARTER	NEW CLUB GOAL	NEW CLUBS	DROPPED CLUBS	QUARTER	NEW MEMBER GROWTH NET GOAL (not reinstated or transfers)	NEW MEMBER GROWTH ACTUAL (not reinstated or transfers)	DROPPED MEMBERS ACTUAL (including transfers)
JULY/AUG/SEPT	1	1	1	JULY/AUG/SEPT	59	150	50
OCT/NOV/DEC	2	1	0	OCT/NOV/DEC	84	112	145
JAN/FEB/MAR	0	1	1	JAN/FEB/MAR	53	50	30
APR/MAY/JUNE	5	0	0	APR/MAY/JUNE	117	0	0

GOALS AND ACTUAL NEW CLUBS CUMULATIVE



GOALS AND ACTUAL MEMBERS CUMULATIVE



DROPPED CLUBS: 2	72 CLUBS OF 146 ADDED 1 OR MORE NEW MEMBERS	GENDER DISTRIBUTION MALE 1,337 (58.49%) FEMALE 949 (41.51%)
DROPPED MEMBERS DECEASED 8 CLUB CANCELLED 0 OTHER 217 <hr/> TOTAL 225	CLICK HERE FOR CUMULATIVE MEMBERSHIP DATA	TOTAL FAMILY UNIT MEMBERS 641 FAMILY MEMBERS PAYING HALF DUES 331